

#EUSpace 

# EU SPACE WEEK 2023

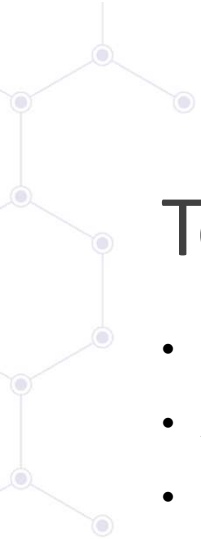
7 - 9 November - Sevilla, Spain

## EO applications for measuring Science Based Targets

Climate and Environment

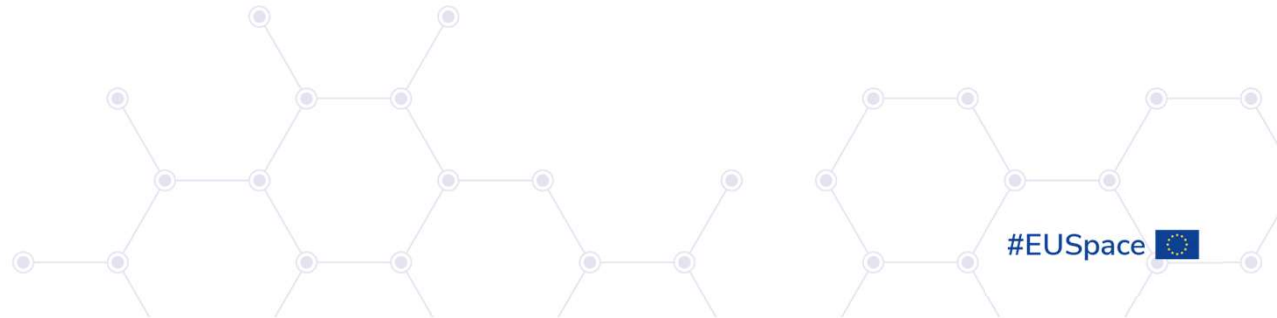
Nanne Tolsma, Satelligence





# Topics

- Company overview
- Application description
- How EU space assets are used
- What are the user needs for EO/GNSS
- Future evolutions needed





# For a transparent and sustainable supply chain.

Reduce your scope 3 emissions, halt deforestation and comply with sustainability regulations.



# About Satelligence

We are a remote sensing company monitoring tropical forest landscapes globally, in near real-time to generate actionable insights on **global agricultural performance** and **supply chain risks**

**1 billion**

Hectares covered

**20+**

years of expertise

**5**

offices in West Africa, South America, South East Asia, USA, Europe





Coffee



Palm Oil



Cocoa



Soy



Leather & Beef



Sugar Cane



Rubber



Pulp & Paper



Coconut



Forest



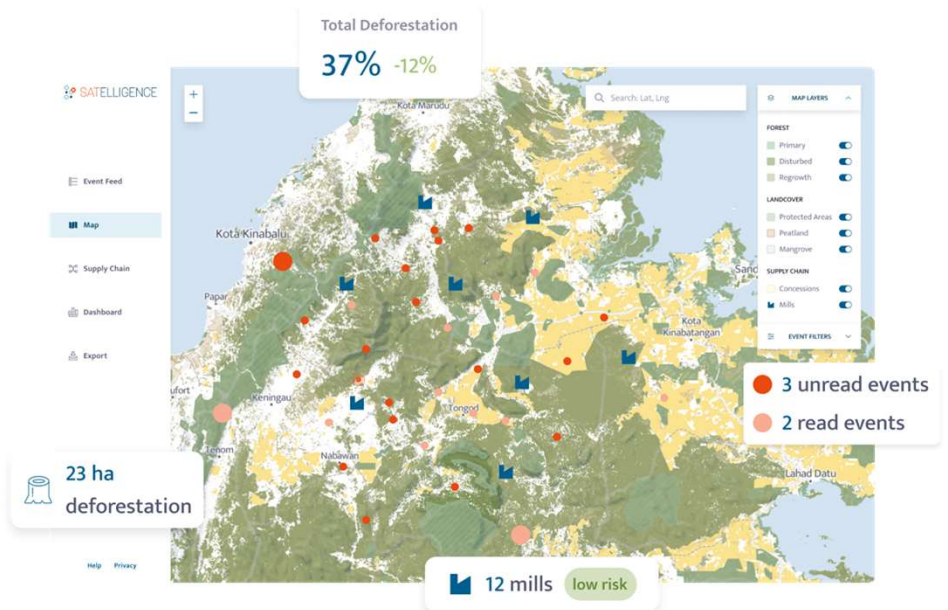
# Clients



## Web Application

An early warning system that proactively identifies risk hotspots and gives real-time alerts on deforestation

- A supply chain risk overview
- Real-time notifications of high risk events
- Quick identification of risk sources
- Capture of supply chain risk components
- Easy exporting of the relevant data





EU  
SPACE  
WEEK  
2023

# EU Space Assets & Applications for measuring Science Based Targets

#EUSpace 



## **SUPPLY CHAIN RISK MONITORING**

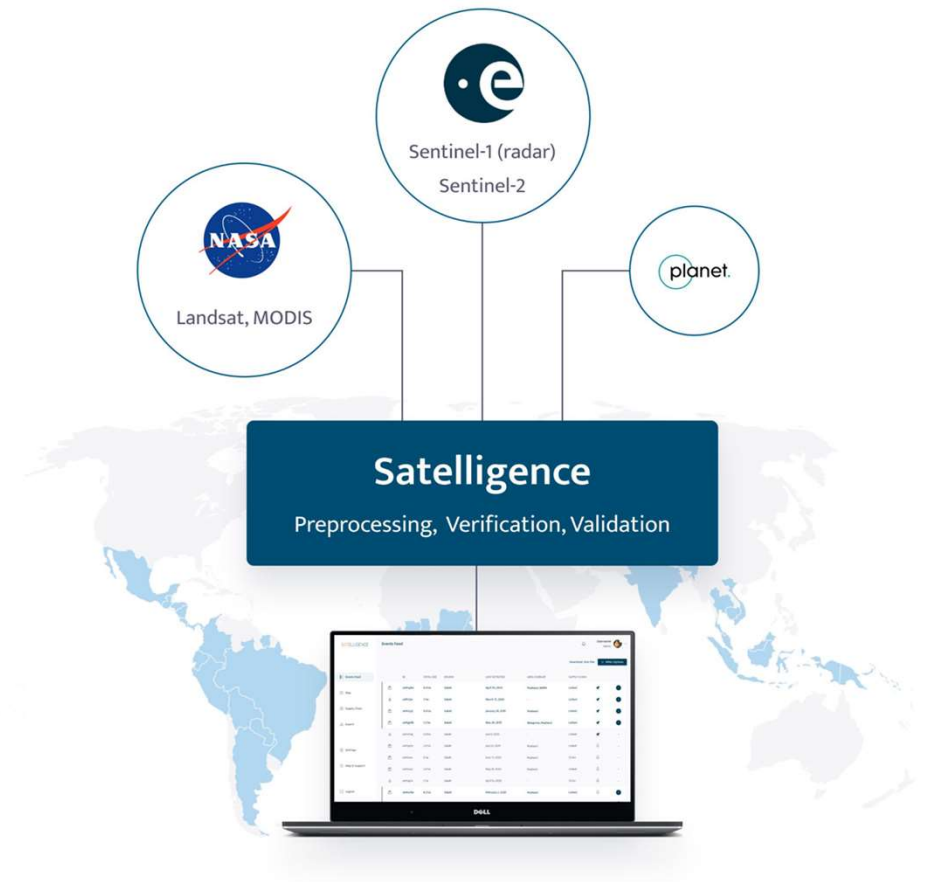
Where is **deforestation** happening in my supply chain, and how much?



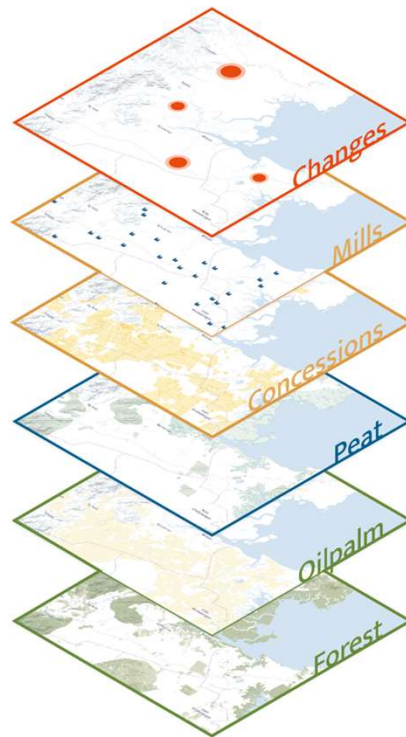
# Optical and radar satellite data

&

# Supply chain data



# Approach



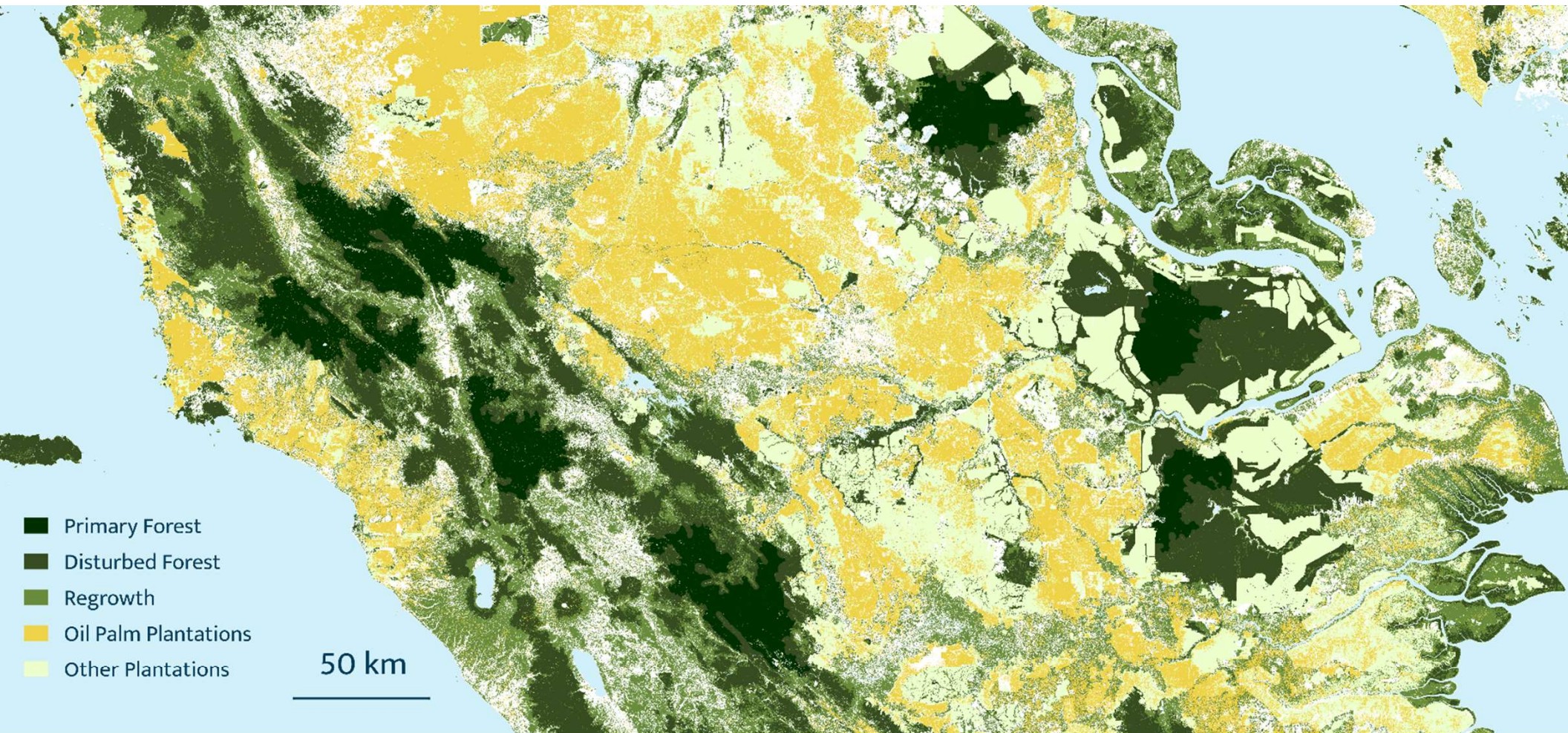
**Change**  
deforestation, fires, etc.

**Supply Chain**  
concessions, mills, silos, crushers, ports, etc.

**Context**  
administrative, compliance (peat, WDPA, HCV)

**Commodity**  
forest, carbon, oilpalm, etc.





Forest & Commodity baseline



# Riau (Indonesia), 2022-2023

Land clearance



Deforestation



## **SUPPLY CHAIN RISK MONITORING**

What are the scope 3 emissions in my supply chain network? Which commodities and suppliers are responsible for the emissions?





Leaders | Sustainable investing

# ESG should be boiled down to one simple measure: emissions

Three letters that won't save the planet



Mark Harris

Jul 21st 2022

↩ Share



# AMBITIOUS CORPORATE CLIMATE ACTION

Lead the way to a zero-carbon economy, boost innovation and drive sustainable growth by setting ambitious, science-based emissions reduction targets

[SET A TARGET](#)

[LEARN MORE](#)

# Forest, Land and Agriculture (FLAG)

The SBTi's FLAG Guidance provides the world's first standard method for companies in land-intensive sectors to set science-based targets that include land-based emission reductions and removals. The guidance enables companies to reduce the 22% of global greenhouse gas emissions from agriculture, forestry and other land use.



- Aluminium
- Apparel and footwear
- Aviation
- Buildings
- Cement
- Chemicals
- Financial institutions
- Forest, Land and Agriculture (FLAG)
- Information and Communication Technology (ICT)
- Maritime
- Oil and Gas
- Power
- Steel



## Standards & Protocols

GHG protocol

SBTI FLAG

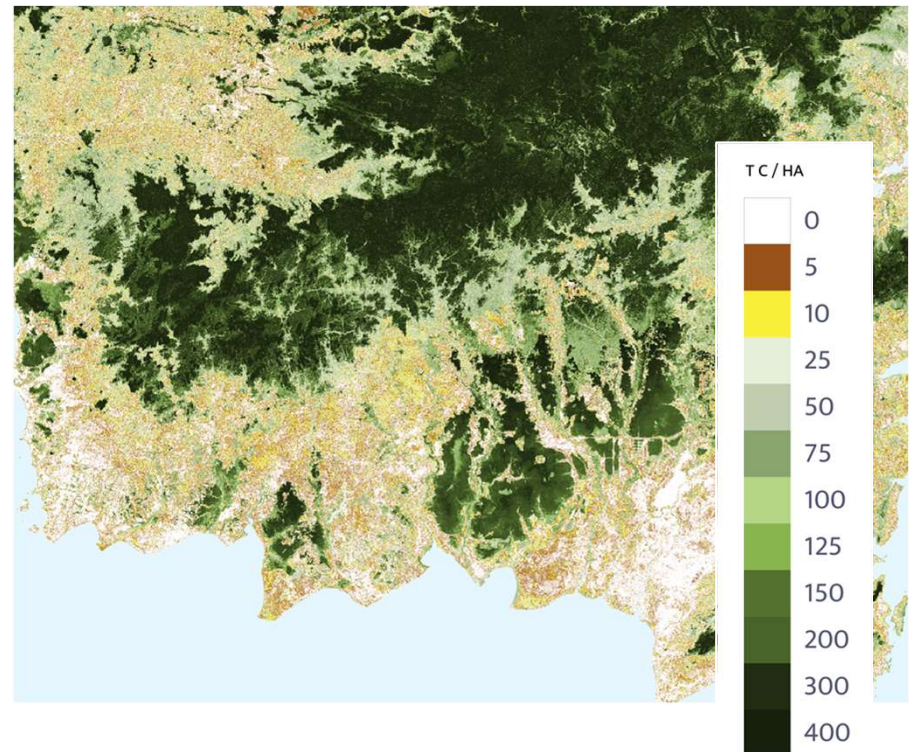
The problem with these frameworks is that they are very broadly scoped, vaguely defined & cross-referencing; there is a lot of room for interpretation. That leads to confusion, you need to be an expert to understand.

# Carbon emissions

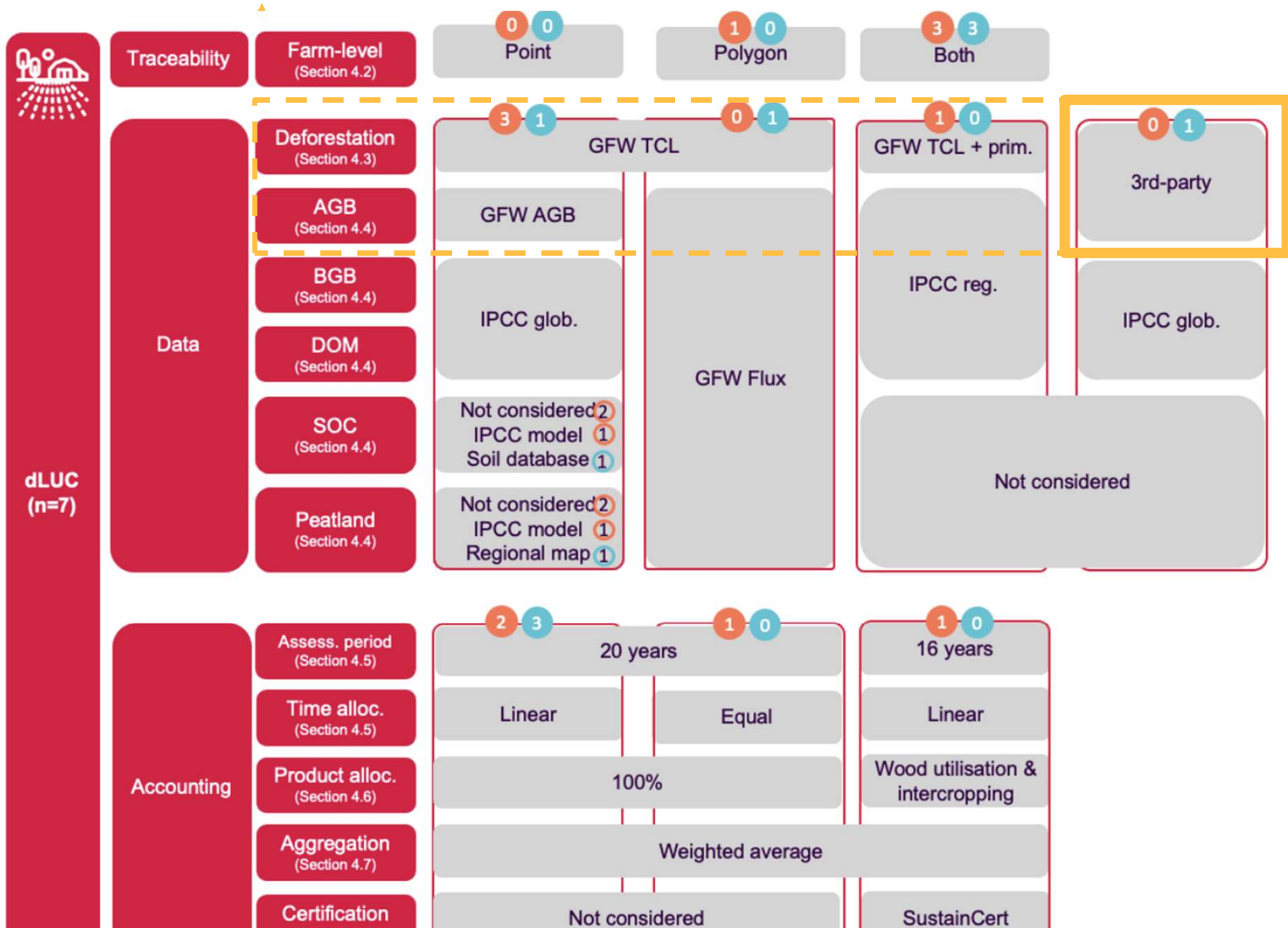
We measure **carbon emissions and removals from deforestation and reforestation** in supply chains, at farm level, and across landscapes.

Our combined insights for carbon emissions and removal allow for a accurate breakdown of opportunities to **reduce and offset supply chain emissions**, meet climate commitments, and create supplier-specific emission factors

Working often in partnership with











EU  
SPACE  
WEEK  
2023

Future evolutions needed

#EUSpace 

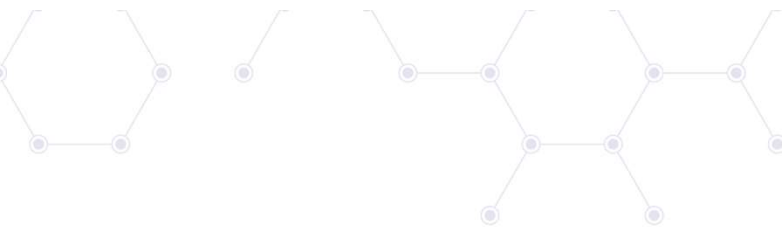
# Requirements

Better biomass calculations are required for emissions / climate commitments and regulations

Better understanding of forest types and peatland will drive improved action to safeguard biodiversity and reduce emissions

Satellite sensors like L-band radar can greatly improve existing applications

Can better location data help with traceability?



EU  
SPACE  
WEEK  

---

2023

[www.euspaceweek.eu](http://www.euspaceweek.eu) | #EUSW

